



PROFILE



ADMA SERVICES

(002251196-X)

Coloring the canvas of nature.

www.admaservices.com



ADMA SERVICES

(002251196-X)

our company combines
**innovative design,
horticultural expertise,
and exceptional customer
service to deliver tailored landscaping
solutions for residential,
commercial, and municipal clients.**

INDEX

Company Overview

Mission Statement

Core Values

- Transforming Outdoor Spaces
- Enhancing Natural Beauty
- Exceeding Client Expectations
- Superior Craftsmanship
- Commitment to Excellence

Services Offered

Client Portfolio

- Residential Landscapes
- Commercial Complexes

Advise And Assistance

Photo Collections

COMPANY OVERVIEW



We are specialist in providing Landscaping Services. With the intention of providing our valued customers the best services expected, we have also adapted many flexible plans and ways of carrying-out our tasks according to the convenience of our clients.

Our staff are qualified and experienced in this field and we have successfully dealt with many clients who are utmost satisfied with the performance of our landscaping services.





We extend our services to clients from all types of area background, including housing areas, hospitals, condominiums, clinics, restaurants, hotels, corporate office buildings, churches, temples and all types of landed properties.

Our services begins with a visit by our experienced staff to your site for a complete inspection and a customised action plan to suite your needs and requirements.



MISSION STATEMENT

Our mission is to **transform**
outdoor spaces into
stunning,
sustainable
environments
that enhance **natural**
beauty.

We are dedicated to exceeding our
clients' expectations
through **innovative**
design, superior
craftsmanship,
and an unwavering commitment to
environmental
stewardship.



CORE VALUES



1

Transforming Outdoor Spaces

We turn ordinary areas into breathtaking landscapes that reflect each client's unique vision.

2

Enhancing Natural Beauty

Our designs emphasize natural aesthetics, creating harmonious and visually appealing spaces.

3

Exceeding Client Expectations

We aim to surpass client expectations, ensuring complete satisfaction with every project.

4

Superior Craftsmanship

We use the finest materials and skilled artisans to ensure exceptional and lasting workmanship.

5

Commitment to Excellence

We uphold the highest standards from consultation to project completion and beyond.

By embracing these **principles,**
we create outdoor environments
that are **beautiful,**
functional, sustainable,
and enduring.

SERVICES OFFERED

Tailored designs that reflect the unique style and needs of each client.

Landscaping Services

Landscaping can be classified as an art of pure arrangement and diversifying the existing surrounding into a place concerted in our mind according to our likes.

In this line, though we often suggest our clients with the variety our landscaping plans, we never fail to listen to the needs of our clients and instill them into the final outcome.

The basic elements in the landscape theory are color, shape, scale and texture. These elements are given much importance to design the "hard scape" and "soft scape".

The following are the area and types of landscaping that are offered in our company:

Hardscape landscaping

Tree Cutting

Grass cutting / maintenance

House garden maintenance

01

03

05

07

02

04

06

Softscape Landscaping

Trees / Plants Landscaping

Artificial Gras Installation

CLIENT PORTFOLIO

Landscaping Services has a diverse portfolio, including residential properties, commercial complexes, municipal parks, and educational institutions. Notable projects include:

Residential Landscapes

Customized gardens, patios, and outdoor living spaces that enhance property value and enjoyment.

Commercial Complexes

Attractive and functional landscapes for office buildings, shopping centers, and industrial parks.

ADVISE AND ASSISTANCE

The background image is a vibrant, high-quality photograph of a park or landscaped area. It features several tall, mature trees with dense green foliage. In the mid-ground, a modern, multi-story building with large windows and a light-colored facade is visible. A paved path winds through the landscape, where several people are walking and enjoying the outdoors. The foreground is filled with various green plants, including tall grasses and ferns, creating a sense of depth and natural beauty.

Prior to starting with our landscaping, it is our practice to send our landscaping specialist to inspect the project area / location.

This would often be done in the presence of our clients to receive their, off record opinions, which most often than not is their inner desire of the outcome.

Besides taking in our client's opinion, our specialists also would suggest and advise on the proper / suitable ways for the makeover to be done. This will give our clients a brief knowledge and assurances to certain extend, on the quality of our work.

During the inspection, quality and type of soil is one of the most important factors that our specialist would look at.

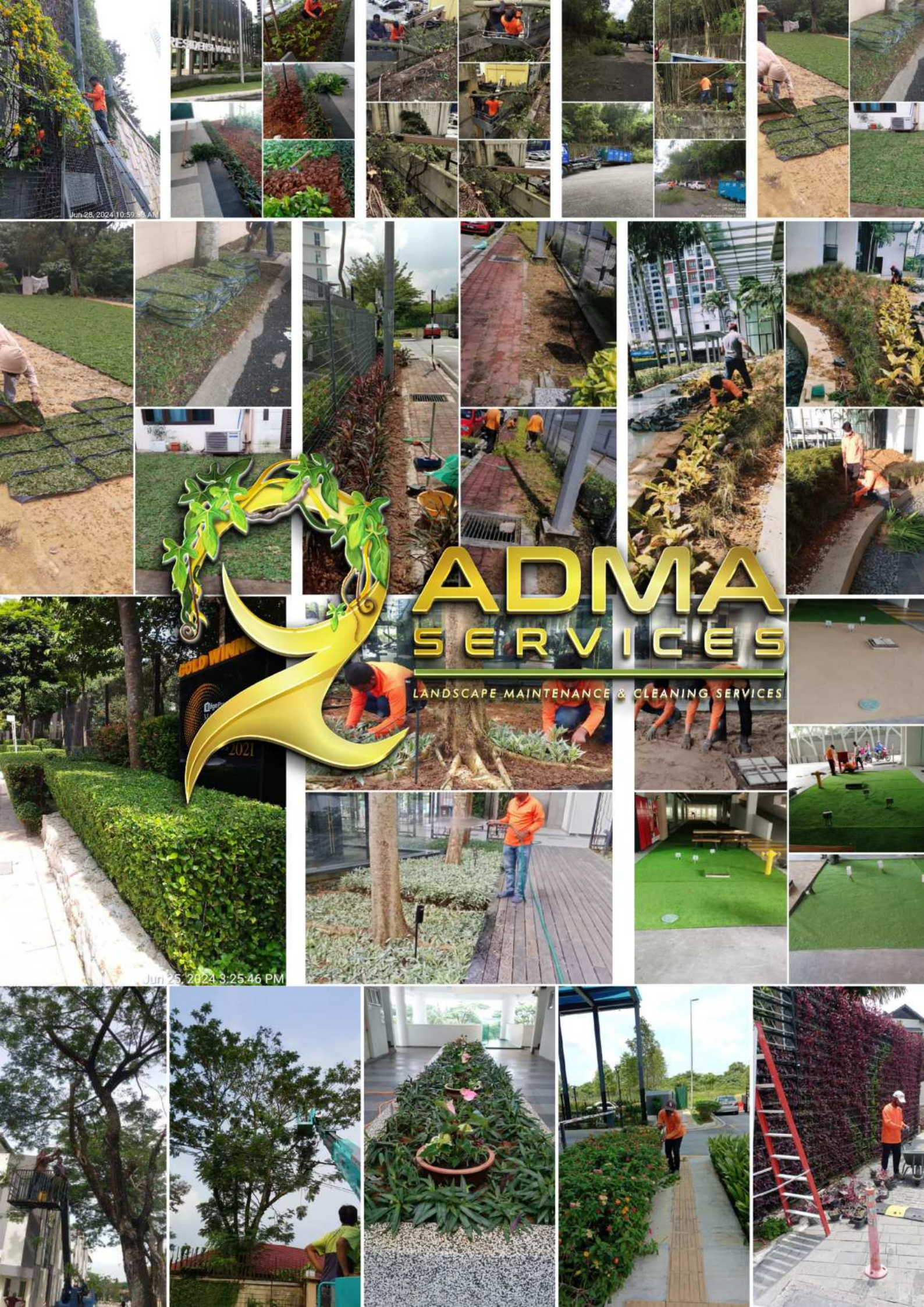


LANDSCAPE MAINTENANCE & CLEANING SERVICES

BEFORE

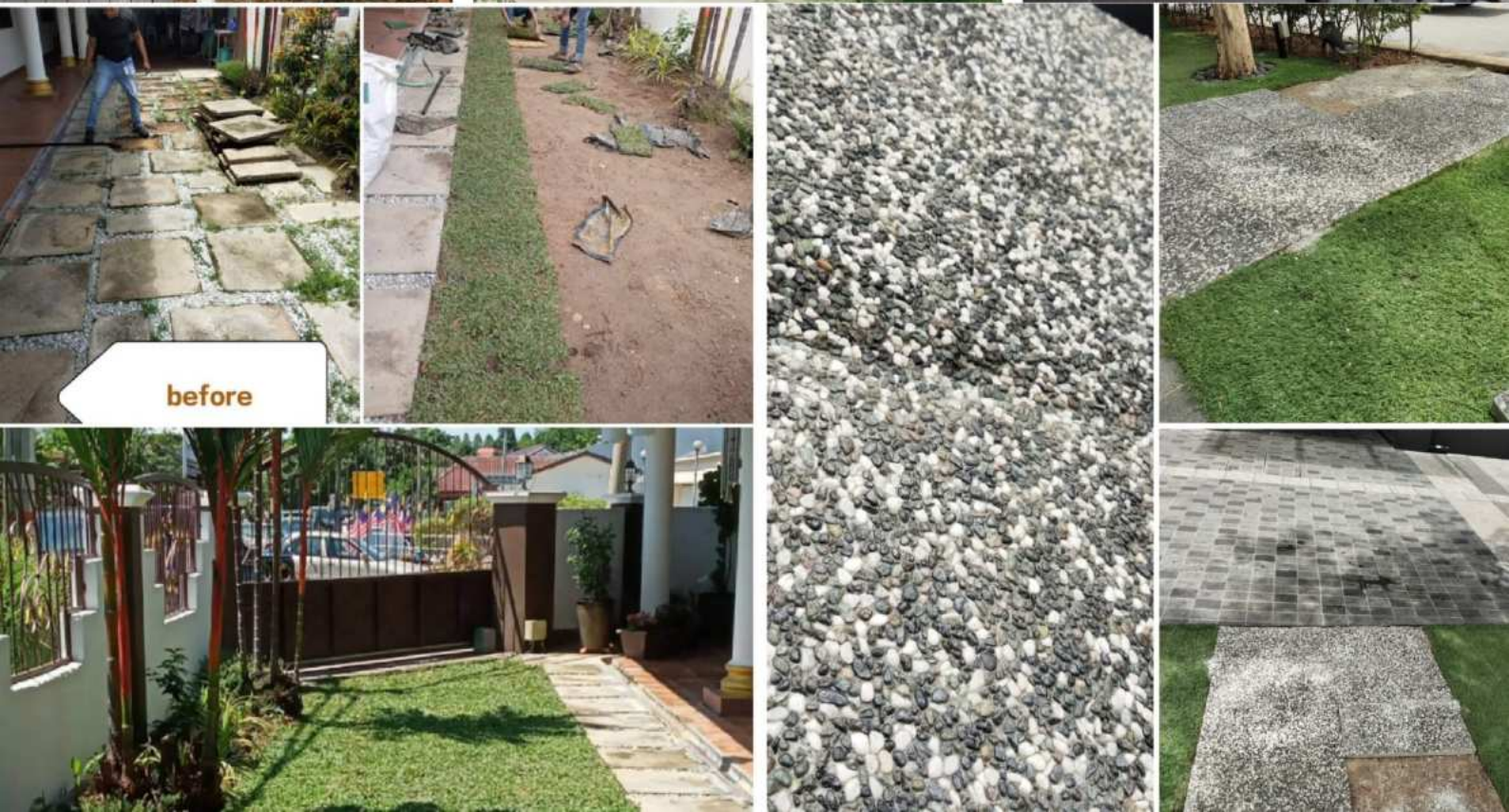
AFTER





Jun 25, 2024 10:59:38 AM

Jun 25, 2024 3:25:46 PM





ADMA SERVICES

(002251196-X)

Coloring the canvas of nature.

📍 0303 Koi Legian, Seksyen 5, Batu 8,
Jalan Puchong Selangor.

📘 AdmaServices

✉ admaservices8055@gmail.com

☎ 010-2313 407

www.admaservices.com